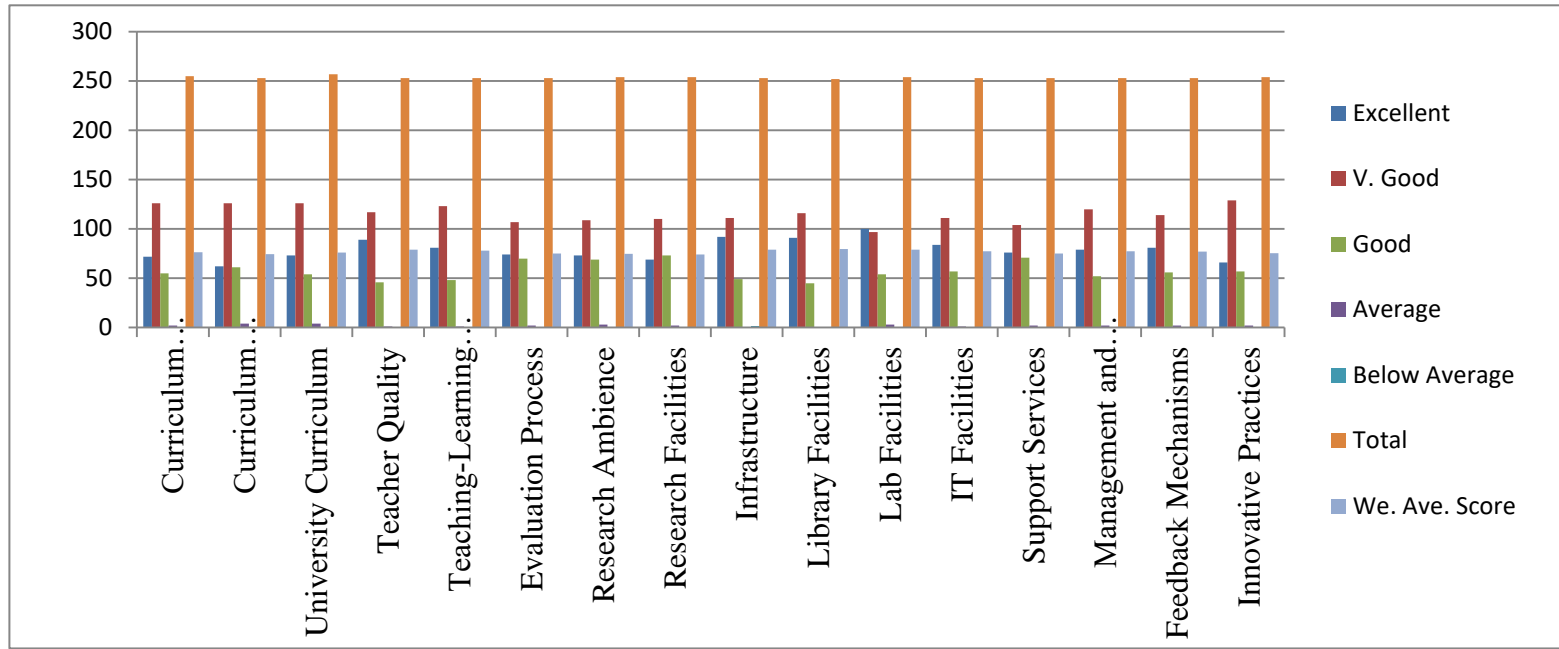


St. Xavier's Catholic College of Engineering, Chunkankadai
Internal Quality Assurance Cell
Feedback Analysis

Alumni Feedback Analysis

Overall Feedback

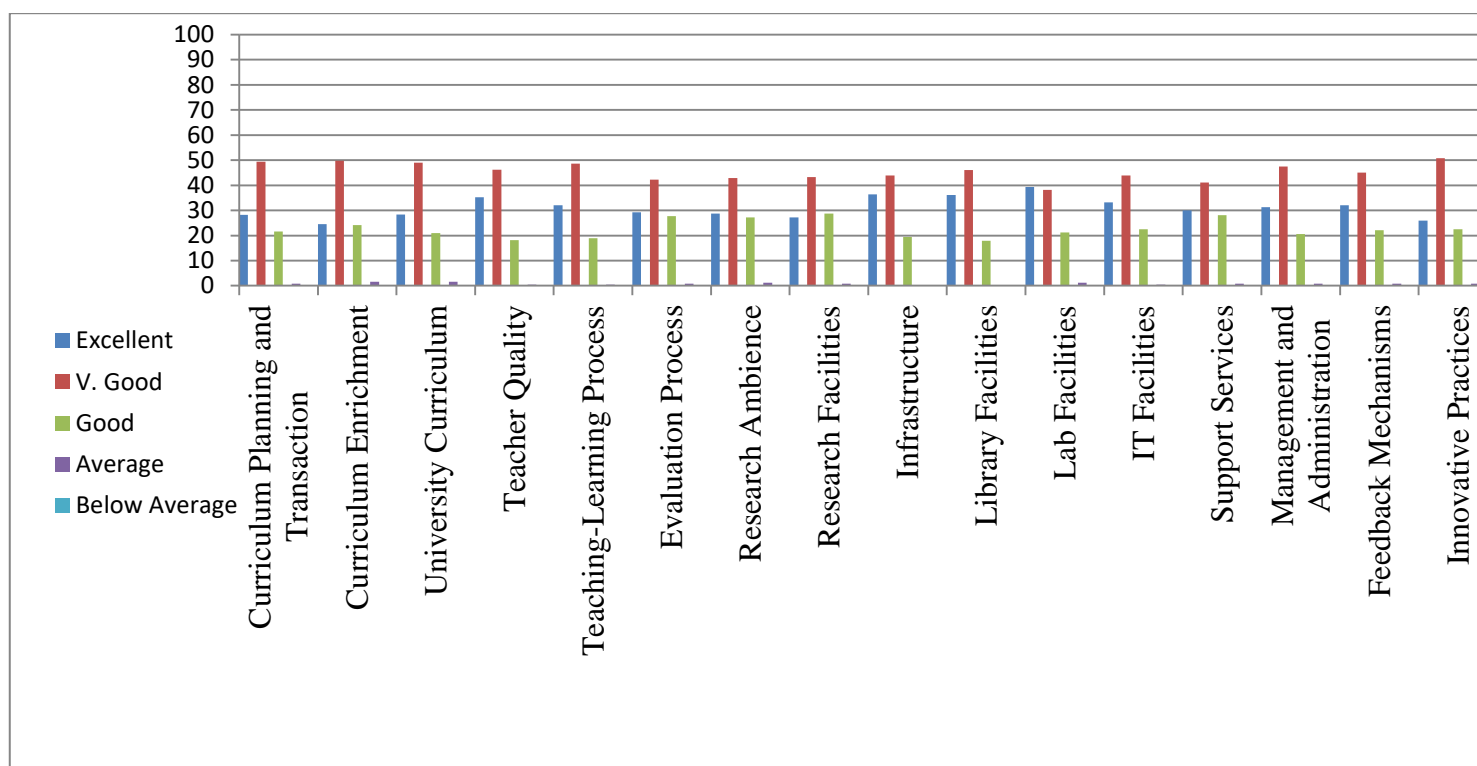
Sl. No.	Feedback Element	Excellent	V. Good	Good	Average	Below Average	Total	We. Ave. Score
1	Curriculum Planning and Transaction	72	126	55	2	0	255	76.27
2	Curriculum Enrichment	62	126	61	4	0	253	74.31
3	University Curriculum	73	126	54	4	0	257	76.07
4	Teacher Quality	89	117	46	1	0	253	79.05
5	Teaching-Learning Process	81	123	48	1	0	253	78.06
6	Evaluation Process	74	107	70	2	0	253	75.00
7	Research Ambience	73	109	69	3	0	254	74.80
8	Research Facilities	69	110	73	2	0	254	74.21
9	Infrastructure	92	111	49	0	1	253	78.95
10	Library Facilities	91	116	45	0	0	252	79.56
11	Lab Facilities	100	97	54	3	0	254	78.94
12	IT Facilities	84	111	57	1	0	253	77.47
13	Support Services	76	104	71	2	0	253	75.10
14	Management and Administration	79	120	52	2	0	253	77.27
15	Feedback Mechanisms	81	114	56	2	0	253	77.08
16	Innovative Practices	66	129	57	2	0	254	75.49



Overall Feedback Rating in %

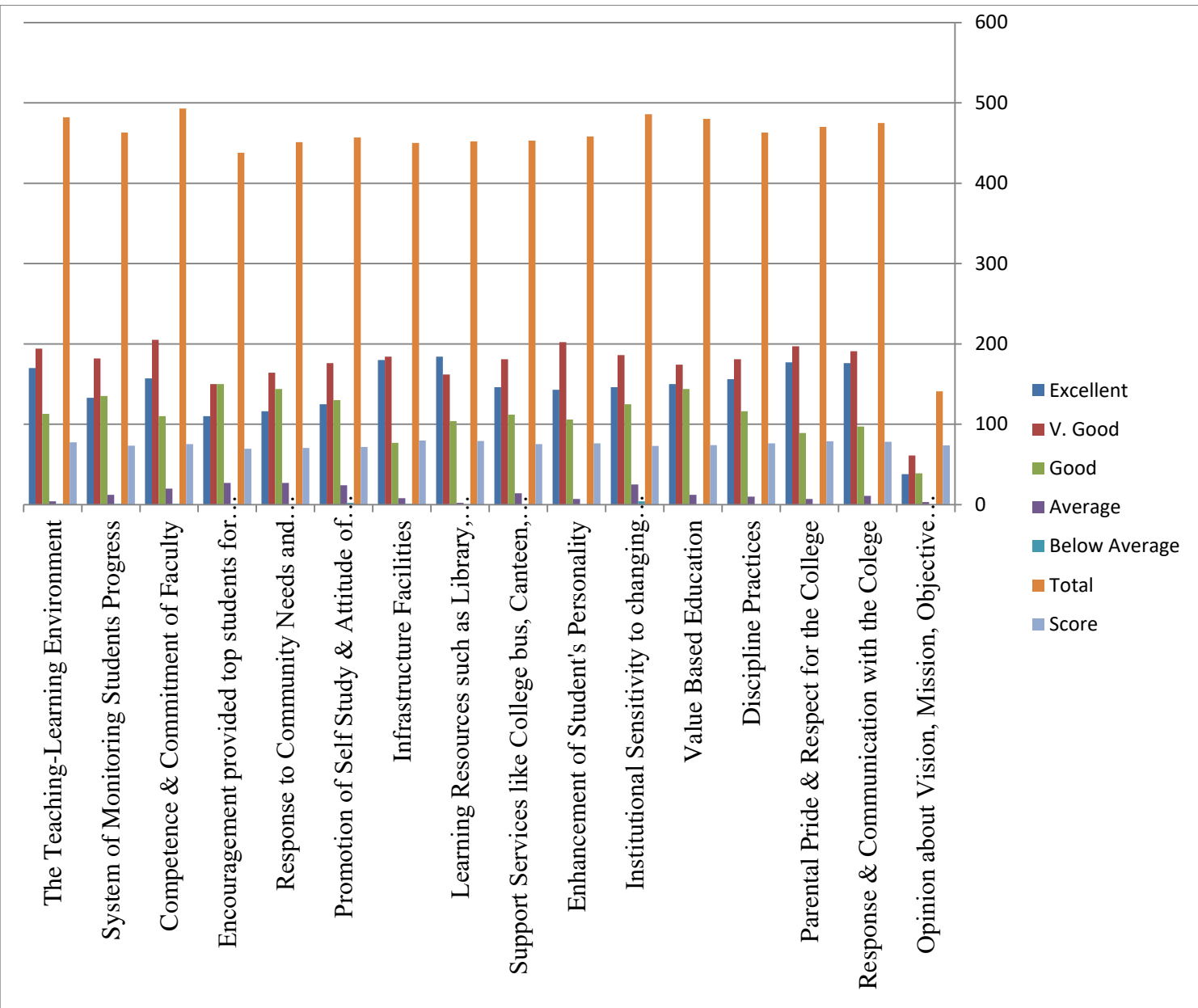
Sl. No.	Feedback Element	Excellent	V. Good	Good	Average	Below Average	Total	We. Ave. Score
1	Curriculum Planning and Transaction	28.2353	49.4118	21.5686	0.78431	0	255	76.27
2	Curriculum Enrichment	24.5059	49.8024	24.1107	1.58103	0	253	74.31
3	University Curriculum	28.4047	49.0272	21.0117	1.55642	0	257	76.07
4	Teacher Quality	35.1779	46.2451	18.1818	0.39526	0	253	79.05
5	Teaching-Learning Process	32.0158	48.6166	18.9723	0.39526	0	253	78.06
6	Evaluation Process	29.249	42.2925	27.668	0.79051	0	253	75.00
7	Research Ambience	28.7402	42.9134	27.1654	1.1811	0	254	74.80
8	Research Facilities	27.1654	43.3071	28.7402	0.7874	0	254	74.21
9	Infrastructure	36.3636	43.8735	19.3676	0	0.39526	253	78.95
10	Library Facilities	36.1111	46.0317	17.8571	0	0	252	79.56

11	Lab Facilities	39.3701	38.189	21.2598	1.1811	0	254	78.94
12	IT Facilities	33.2016	43.8735	22.5296	0.39526	0	253	77.47
13	Support Services	30.0395	41.1067	28.0632	0.79051	0	253	75.10
14	Management and Administration	31.2253	47.4308	20.5534	0.79051	0	253	77.27
15	Feedback Mechanisms	32.0158	45.0593	22.1344	0.79051	0	253	77.08
16	Innovative Practices	25.9843	50.7874	22.4409	0.7874	0	254	75.49



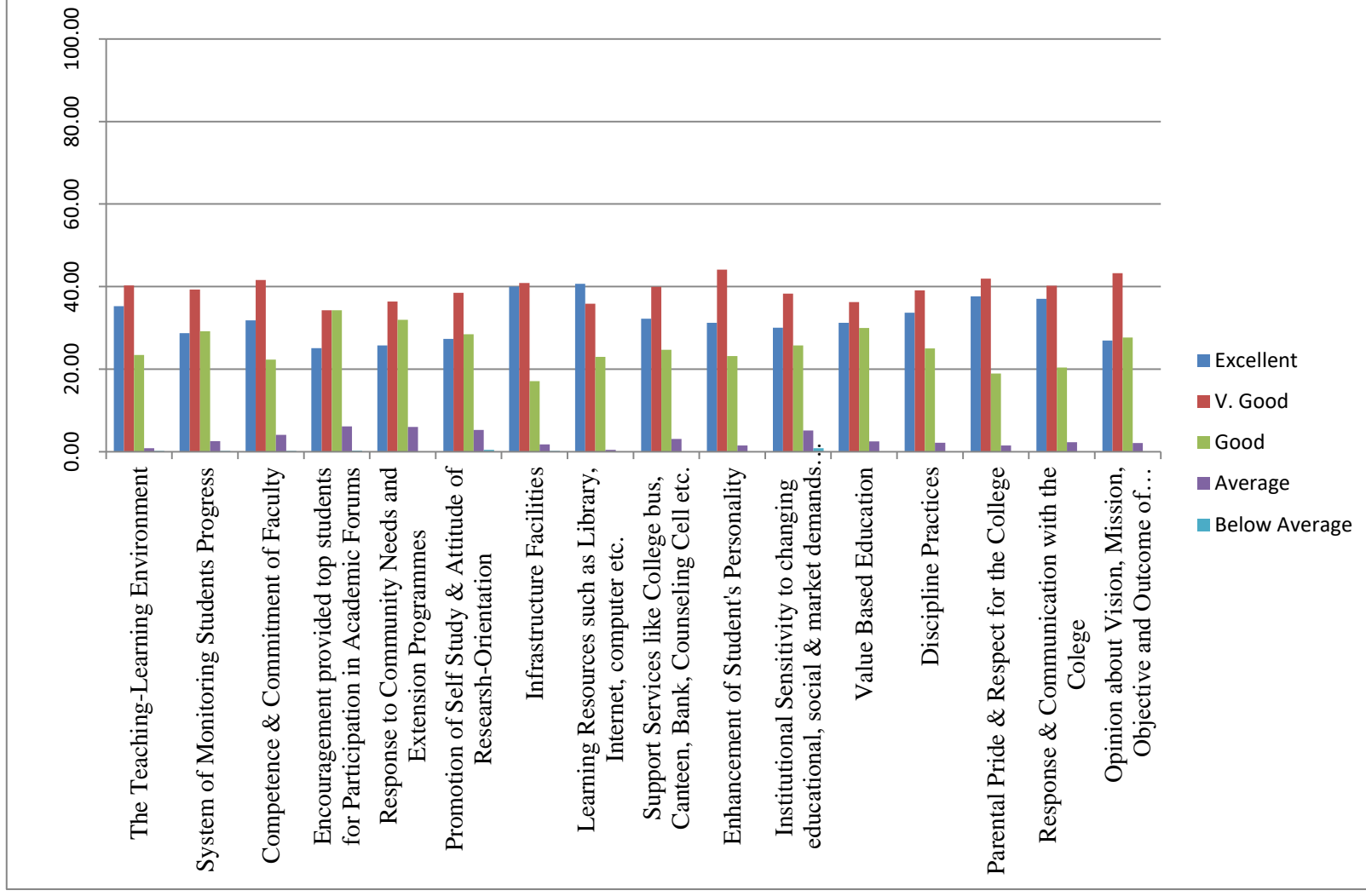
Parents Feedback

No. of Parents' Responses	Feedback Element	The Teaching-Learning Environment	System of Monitoring Student's Progress	Competence & Commitment of Faculty	Encouragement provided to students for Participation in Academic Forums	Response to Community Needs and Extension Programmes	Promotion of Self Study & Attitude of Research-Oriented	Infrastructure Facilities	Learning Resources such as Library, Internet, Computer etc.	Support Services like College bus, Canteen, Bank, Counseling Cell etc.	Enhancement of Student's Personality	Institutional Sensitivity to changing educational, social & market demands (Spoken English Courses, Curriculum, Personality Development Programmes, Career Oriented Programmes etc.)	Value Based Education	Discipline Practices	Parental Pride & Respect for the College	Response & Communication with the College	Opinion about Vision, Mission, Objective and Outcome of College/Department
Academic Year: 2018-2019 Total No. of Parents' responses: 493	Excellent	170	133	157	110	116	125	180	184	146	143	146	150	156	177	176	38
	Very Good	194	183	205	150	164	176	184	162	181	202	186	174	181	197	191	61
	Good	113	135	110	150	144	130	77	104	112	106	125	144	116	89	77	39
	Average	4	12	20	27	27	24	8	2	140	7	25	12	10	7	11	3
	Below Average	1	1	1	1	0	2	1	0	0	0	4	0	0	0	0	0
	Total responses	482	463	493	438	451	457	450	452	453	458	486	480	463	470	475	141
	Score	77.39	73.43	75.20	69.46	70.45	71.77	79.67	79.20	75.33	76.26	72.89	74.06	76.08	78.94	78.00	73.76



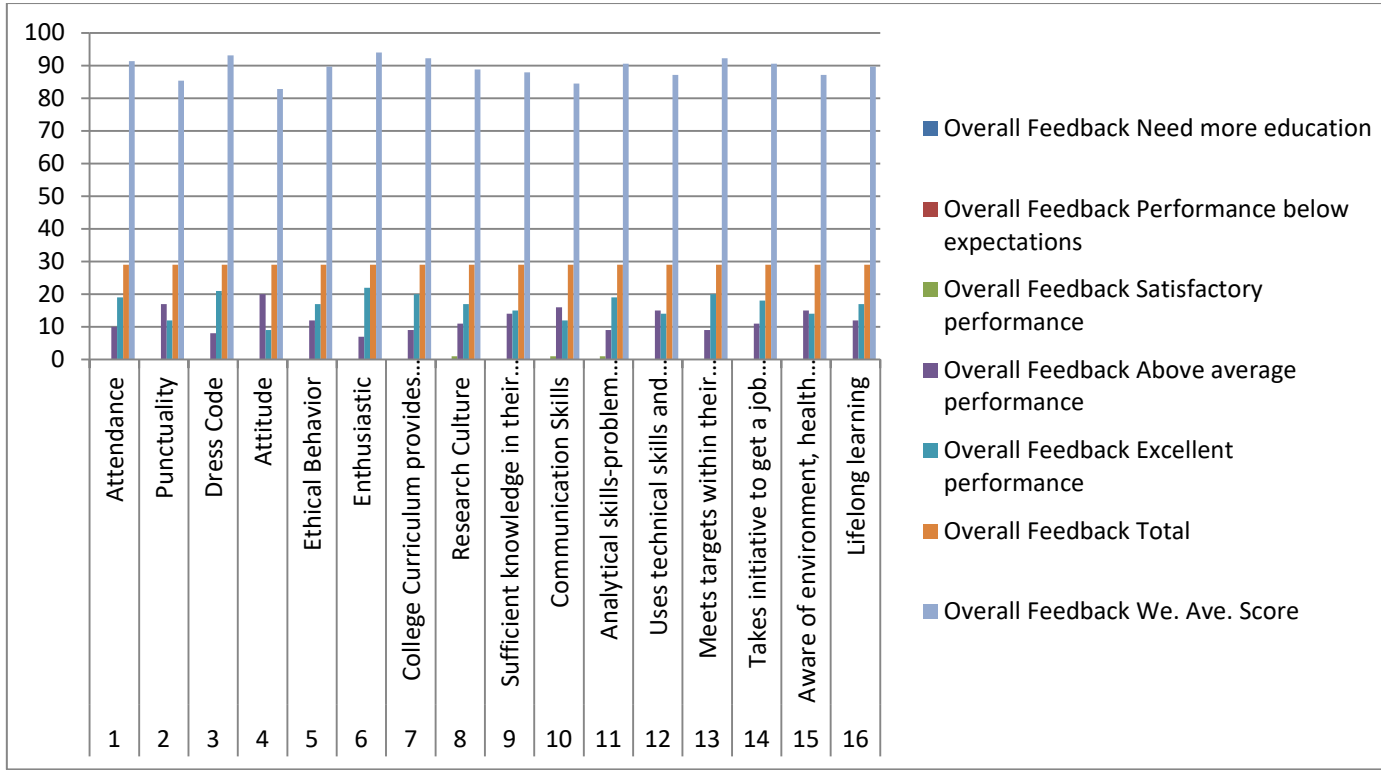
Overall Parents Feedback in Percentage

Overall Rating in %	Feedback Element	The Teaching-Learning Environment	System of Monitoring Student's Progress	Competence & Commitment of Faculty	Encouragement provided to students for Participation in Academic Forums	Response to Community Needs and Extension Programmes	Promotion of Self Study & Attitude of Research-Oriented	Infrastructure Facilities	Learning Resources such as Library, Internet, Computer etc.	Support Services like College bus, Canteen, Bank, Counseling Cell etc.	Enhancement of Student's Personality	Institutional Sensitivity to changing educational, social & market demands (Spoken English Courses, Curriculum, Personality Development Programmes, Career Oriented Programmes etc.)	Value Based Education	Discipline Practices	Parental Pride & Respect for the College	Response & Communication with the College	Opinion about Vision, Mission, Objective and Outcome of College/Department
Academic Year: 2018-2019 Total No. of Parents' responses: 493	Excellent	35.27	28.73	31.85	25.11	25.72	27.35	40.00	40.71	32.23	31.22	30.04	31.25	33.69	37.66	37.05	26.95
	Very Good	40.25	39.31	41.58	34.25	36.36	38.51	40.89	35.84	39.96	44.10	38.27	36.25	39.09	41.91	40.21	43.26
	Good	23.44	29.16	22.31	34.25	31.93	28.45	17.11	23.01	24.72	23.14	25.72	30.00	25.05	18.94	20.42	27.66
	Average	0.83	2.59	4.06	6.16	5.99	5.25	1.78	0.44	3.09	1.53	5.14	2.50	2.16	1.49	2.32	2.13
	Below Average	0.21	0.22	0.20	0.23	0.00	0.44	0.22	0.00	0.00	0.00	0.82	0.00	0.00	0.00	0.00	0.00



Employer Feedback Analysis

Overall Feedback								
Sl. No.	Feedback Element	Need more education	Performance below expectations	Satisfactory performance	Above average performance	Excellent performance	Total	We. Ave. Score
1	Attendance	0	0	0	10	19	29	91.38
2	Punctuality	0	0	0	17	12	29	85.34
3	Dress Code	0	0	0	8	21	29	93.10
4	Attitude	0	0	0	20	9	29	82.76
5	Ethical Behavior	0	0	0	12	17	29	89.66
6	Enthusiastic	0	0	0	7	22	29	93.97
7	College Curriculum provides support for his/her job	0	0	0	9	20	29	92.24
8	Research Culture	0	0	1	11	17	29	88.79
9	Sufficient knowledge in their field of expertise	0	0	0	14	15	29	87.93
10	Communication Skills	0	0	1	16	12	29	84.48
11	Analytical skills-problem analysis with appropriate action	0	0	1	9	19	29	90.52
12	Uses technical skills and modern tools acquired from institution	0	0	0	15	14	29	87.07
13	Meets targets within their allotted timeframe	0	0	0	9	20	29	92.24
14	Takes initiative to get a job done by overcoming obstacles	0	0	0	11	18	29	90.52
15	Aware of environment, health and safety issues for sustainable development	0	0	0	15	14	29	87.07
16	Lifelong learning	0	0	0	12	17	29	89.66



Students' Feedback Report	
Academic Year :	2018 -- 2019
Semester :	(1,3,5,7)
Department :	All Department

Analysis								
No.	Question	Total	0% - 49%	50% - 59%	60% - 69%	70% - 79%	80% - 89%	90% - 100%
1	Punctuality of the teacher	328	2	5	39	93	106	83
2	Audibility of teacher's voice while teaching	328	2	12	41	101	98	74
3	Readability of teacher's writings on the board	328	2	15	53	92	94	72
4	The teachers ability in keeping the class in attending mode	328	4	12	54	103	83	72
5	The teacher explains the course description, objectives and outcomes, also connects course outcomes to program outcomes, vision and mission	328	3	16	52	111	80	66
6	The teacher meticulously explains the major and minor concepts of the subject and the relations among the concepts	328	4	17	48	108	88	63
7	The teacher handles the class in such a way that I understand the concepts and the teaching stimulates interest in the subject	328	3	17	52	104	83	69
8	The teacher prepares the students for the university examination	328	4	18	48	106	89	63
9	The teacher is enthusiastic about teaching and uses different teaching methods	328	4	18	55	105	82	64
10	The teacher uses technologies and ICT facilities like PPT, NPTEL, EduSat, animation, video etc.	328	6	30	66	93	79	54

11	The teacher makes me improve my creativity	328	7	20	64	96	79	62
12	The teacher provides opportunities to improve my employability skills	328	6	19	59	102	86	56
13	The teacher takes special efforts to clarify questions raised by students and interacts with students during lecture	328	3	16	47	109	86	67
14	Teaching method of the teacher satisfies the needs of advanced learners	328	2	20	46	114	89	57
15	Teaching method of the teacher satisfies the needs of slow learners	328	2	17	57	100	90	62
16	The teacher uses student seminars to improve the participation of students	328	4	17	60	110	74	63
17	Assignments are given for both advanced and normal learning	328	2	18	54	104	85	65
18	The teacher gives importance and uses cooperative (group) learning to improve the study habit of the students	328	3	18	59	102	81	65
19	The extra syllabus makes me to know more about the subject like basics and real life applications	328	3	18	63	97	84	63
20	The teacher uses and inspires me to refer additional materials apart from the university prescribed books	328	5	19	53	104	84	63
21	The teacher completes the syllabus on time	328	4	15	45	105	89	70
22	The teacher uses continuous assessment methods to measure my level of learning	328	2	17	60	100	88	61
23	The question papers set by the teacher test different cognitive levels and attainment of course outcomes and program outcomes	328	2	18	50	111	79	68
24	The teacher evaluates answer scripts and assignments on time, the evaluation makes me understand my strength and weakness and he/she handles the reported grievances with concern	328	1	14	51	114	82	66
25	The teacher shows interest in getting feedback from the students and responses appropriately	328	1	20	59	101	85	62

26	The teacher analyses the students' performance in the internal assessment tests, class tests, assignments etc. and discusses the analysis with the students in the class	328	2	17	52	97	93	67
27	The teacher changes the teaching strategy based on the feedback and performance of the students	328	3	15	59	104	88	59
28	The teacher conducts special examinations and classes for the needy students	328	3	18	54	104	86	63
29	The teacher is impartial towards all the students	328	1	13	49	104	91	70
30	The teacher discusses and collects feedback from students on the university syllabus	328	2	18	53	105	87	63
31	My overall rating of the teacher is	160	1	6	22	56	45	30

Students' Feedback Report	
Academic Year :	2018 -- 2019
Semester :	(2,4,6,8)
Department :	All Department

Analysis								
No.	Question	Total	0% - 49%	50% - 59%	60% - 69%	70% - 79%	80% - 89%	90% - 100%
1	Punctuality of the teacher	271	2	5	30	97	80	57
2	Audibility of teacher's voice while teaching	271	2	9	34	103	65	58
3	Readability of teacher's writings on the board	271	3	10	40	101	64	53
4	The teachers ability in keeping the class in attending mode	271	4	9	47	98	63	50

5	The teacher explains the course description, objectives and outcomes, also connects course outcomes to program outcomes, vision and mission	271	3	7	50	95	67	49
6	The teacher meticulously explains the major and minor concepts of the subject and the relations among the concepts	271	3	9	49	101	62	47
7	The teacher handles the class in such a way that I understand the concepts and the teaching stimulates interest in the subject	271	4	9	49	104	60	45
8	The teacher prepares the students for the university examination	271	3	12	41	102	67	46
9	The teacher is enthusiastic about teaching and uses different teaching methods	271	3	12	45	96	61	54
10	The teacher uses technologies and ICT facilities like PPT, NPTEL, EduSat, animation, video etc.	271	5	18	46	96	59	47
11	The teacher makes me improve my creativity	271	4	13	42	106	54	52
12	The teacher provides opportunities to improve my employability skills	271	3	11	47	99	61	50
13	The teacher takes special efforts to clarify questions raised by students and interacts with students during lecture	271	4	11	45	102	58	51
14	Teaching method of the teacher satisfies the needs of advanced learners	271	4	11	43	102	61	50
15	Teaching method of the teacher satisfies the needs of slow learners	271	5	5	55	96	62	48
16	The teacher uses student seminars to improve the participation of students	271	5	11	47	98	62	48
17	Assignments are given for both advanced and normal learning	271	4	6	49	102	58	52
18	The teacher gives importance and uses cooperative (group) learning to improve the study habit of the students	271	4	9	48	98	61	51
19	The extra syllabus makes me to know more about the subject like basics and real life applications	271	4	8	49	91	68	51
20	The teacher uses and inspires me to refer additional materials apart from the	271	5	10	46	95	66	49

	university prescribed books							
21	The teacher completes the syllabus on time	271	4	8	46	95	68	50
22	The teacher uses continuous assessment methods to measure my level of learning	271	5	8	47	101	62	48
23	The question papers set by the teacher test different cognitive levels and attainment of course outcomes and program outcomes	271	4	8	49	94	67	49
24	The teacher evaluates answer scripts and assignments on time, the evaluation makes me understand my strength and weakness and he/she handles the reported grievances with concern	271	3	10	47	98	67	46
25	The teacher shows interest in getting feedback from the students and responds appropriately	271	3	9	48	101	57	53
26	The teacher analyses the students' performance in the internal assessment tests, class tests, assignments etc. and discusses the analysis with the students in the class	271	3	9	49	92	66	52
27	The teacher changes the teaching strategy based on the feedback and performance of the students	271	3	11	43	108	57	49
28	The teacher conducts special examinations and classes for the needy students	271	3	11	46	97	64	50
29	The teacher is impartial towards all the students	271	2	12	38	105	60	54
30	The teacher discusses and collects feedback from students on the university syllabus	271	4	11	43	104	56	53
31	My overall rating of the teacher is	271	3	8	45	97	62	56